

# OUVERTURE DE LA GROTTTE DE VERSAILLES

## JEAN-BAPTISTE LULLY (1632-1687)



ARRANGED FOR THREE GUITARS  
BY MARK BASINSKI

ARRANGEMENT COPYRIGHT © MARK BASINSKI 2024

### PERFORMANCE NOTE:

IN THE ORIGINAL SOURCES, MELODIES ARE WRITTEN IN EIGHTH-NOTES, E.G.



# Ouverture De Le Grotte De Versailles

Jean-Baptiste Lully

Arr. M. Basinski

Grave (♩ = 58)

Guitar 1

Guitar 2

Guitar 3

This system contains the first five measures of the piece. It is written for three guitars in G major (one sharp) and common time. The tempo is Grave, with a quarter note equal to 58 beats per minute. Guitar 1 has a trill in measure 4. Guitar 2 has a trill in measure 5. Guitar 3 has a trill in measure 5. The key signature is one sharp (F#).

5

This system contains measures 5 through 8. It continues the musical themes established in the first system. The key signature remains one sharp (F#).

9

1. 2. Allegro (♩ = 144)

This system contains measures 9 through 12. It begins with a first ending (1.) and a second ending (2.). The tempo changes to Allegro, with a quarter note equal to 144 beats per minute. The time signature changes to 3/4. The key signature remains one sharp (F#).

15

Measures 15-20 of the musical score. The key signature is B-flat major (two flats). The music is written for three staves. Measure 15 features a treble staff with a half note G4, a quarter note A4, and a half note Bb4, followed by a series of eighth notes. The bass staff has a whole rest. Measure 16 continues the treble staff melody with a half note C5, a quarter note D5, and a half note E5, followed by a series of eighth notes. The bass staff has a whole rest. Measure 17 features a treble staff with a half note F5, a quarter note G5, and a half note A5, followed by a series of eighth notes. The bass staff has a whole rest. Measure 18 features a treble staff with a half note Bb5, a quarter note C6, and a half note D6, followed by a series of eighth notes. The bass staff has a whole rest. Measure 19 features a treble staff with a half note E6, a quarter note F6, and a half note G6, followed by a series of eighth notes. The bass staff has a whole rest. Measure 20 features a treble staff with a half note A6, a quarter note Bb6, and a half note C7, followed by a series of eighth notes. The bass staff has a whole rest.

21

Measures 21-26 of the musical score. The key signature is B-flat major (two flats). The music is written for three staves. Measure 21 features a treble staff with a half note G4, a quarter note A4, and a half note Bb4, followed by a series of eighth notes. The bass staff has a whole rest. Measure 22 features a treble staff with a half note C5, a quarter note D5, and a half note E5, followed by a series of eighth notes. The bass staff has a whole rest. Measure 23 features a treble staff with a half note F5, a quarter note G5, and a half note A5, followed by a series of eighth notes. The bass staff has a whole rest. Measure 24 features a treble staff with a half note Bb5, a quarter note C6, and a half note D6, followed by a series of eighth notes. The bass staff has a whole rest. Measure 25 features a treble staff with a half note E6, a quarter note F6, and a half note G6, followed by a series of eighth notes. The bass staff has a whole rest. Measure 26 features a treble staff with a half note A6, a quarter note Bb6, and a half note C7, followed by a series of eighth notes. The bass staff has a whole rest.

27

Measures 27-32 of the musical score. The key signature is B-flat major (two flats). The music is written for three staves. Measure 27 features a treble staff with a half note G4, a quarter note A4, and a half note Bb4, followed by a series of eighth notes. The bass staff has a whole rest. Measure 28 features a treble staff with a half note C5, a quarter note D5, and a half note E5, followed by a series of eighth notes. The bass staff has a whole rest. Measure 29 features a treble staff with a half note F5, a quarter note G5, and a half note A5, followed by a series of eighth notes. The bass staff has a whole rest. Measure 30 features a treble staff with a half note Bb5, a quarter note C6, and a half note D6, followed by a series of eighth notes. The bass staff has a whole rest. Measure 31 features a treble staff with a half note E6, a quarter note F6, and a half note G6, followed by a series of eighth notes. The bass staff has a whole rest. Measure 32 features a treble staff with a half note A6, a quarter note Bb6, and a half note C7, followed by a series of eighth notes. The bass staff has a whole rest.

34



40

Grave (♩ = 58)



46



# Ouverture De Le Grotte De Versailles

Guitar 1

Jean-Baptiste Lully

Arr. M. Basinski

Grave (♩ = 58)



# Ouverture De Le Grotte De Versailles

Guitar 2

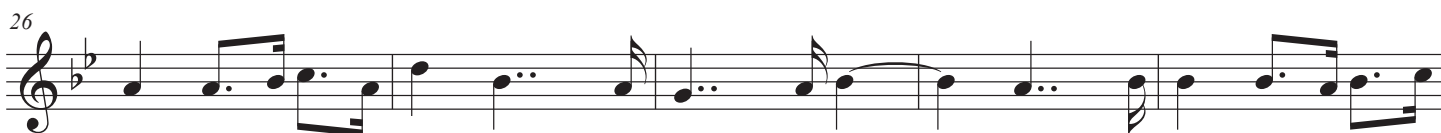
Jean-Baptiste Lully

Arr. M. Basinski

Grave (♩ = 58)



12 Allegro (♩ = 144)



45 Grave (♩ = 58)



# Ouverture De Le Grotte De Versailles

Guitar 3

Jean-Baptiste Lully

Arr. M. Basinski

Grave (♩ = 58)



12 Allegro (♩ = 144)



45 Grave (♩ = 58)

