

# OUVERTURE FROM LE BOURGEOIS GENTILHOMME JEAN-BAPTISTE LULLY (1632-1687)

ARRANGED FOR THREE GUITARS  
BY MARK BASINSKI

ARRANGEMENT COPYRIGHT © MARK BASINSKI 2024

---

## PERFORMANCE NOTE:

IN THE ORIGINAL SOURCES, SOME MELODIES ARE WRITTEN IN EIGHTH-NOTES, E.G.



PERFORMERS OF THAT TIME WOULD UNDERSTAND THAT THESE SHOULD BE PERFORMED AS “NOTES INÉGALES”, UN-EQUAL.

IN THIS ARRANGEMENT, THESE MELODIES HAVE BEEN WRITTEN AS DOTTED-EIGHTH – SIXTEENTH NOTES TO HELP THE MODERN MUSICIAN UNDERSTAND THIS PERFORMANCE PRACTICE



IT IS IMPORTANT TO UNDERSTAND THAT THE DOTTED-NOTE RHYTHM SHOULD NOT BE PERFORMED AS LITERALLY DOTTED-EIGHTH – SIXTEENTH, BUT RATHER AS A QUASI-TRIPLET FEEL (SIMILAR TO THE WAY JAZZ PLAYERS SWING WRITTEN EIGHTH-NOTES).

REGARDING TEMPO, MODERN BAROQUE PERFORMANCE SPECIALISTS COMMONLY PERFORM THE OPENING GRAVE SECTION AT  $\text{♩} = 62$  AND THE ALLEGRO SECTION AT  $\text{♩} = 210$

# Ouverture from Le Bourgeois Gentilhomme

Jean-Baptiste Lully

Arr. M. Basinski

Grave

Guitar 1

Guitar 2

Guitar 3

5

10

1. *tr*

2. *tr*

6/4

15 **Allegro**

Measures 15-18 of the Ouverture from Le Bourgeois Gentilhomme. The music is in 6/4 time and B-flat major. The first staff (treble clef) begins with a repeat sign and contains a melodic line. The second staff (treble clef) has a whole rest in measure 15, followed by a melodic line starting in measure 16, featuring two trills marked 'tr'. The third staff (treble clef) has whole rests in measures 15, 16, and 17, followed by a whole rest in measure 18.

Measures 19-22 of the Ouverture from Le Bourgeois Gentilhomme. The first staff (treble clef) continues the melodic line, featuring a trill marked 'tr' in measure 19 and a fermata in measure 22. The second staff (treble clef) provides harmonic support with a melodic line. The third staff (treble clef) continues the bass line, featuring a long slur spanning measures 19 and 20.

Measures 23-26 of the Ouverture from Le Bourgeois Gentilhomme. The first staff (treble clef) continues the melodic line, featuring a trill marked 'tr' in measure 24 and a fermata in measure 25. The second staff (treble clef) continues the harmonic support. The third staff (treble clef) continues the bass line, featuring a sharp sign in measure 23 and a fermata in measure 25.

27

Trills are marked above the first and fourth measures of the treble staff.

31

A trill is marked above the fourth measure of the treble staff.

35

Trills are marked above the second, third, and fourth measures of the treble staff.

39

Measures 39-42 of the Ouverture from Le Bourgeois Gentilhomme. The score is written for three staves in G minor (three flats). Measure 39 features a treble staff with a melodic line and a trill, a middle staff with a rhythmic accompaniment, and a bass staff with a bass line. The music continues through measures 40, 41, and 42, ending with a repeat sign.

43

Measures 43-46 of the Ouverture from Le Bourgeois Gentilhomme. The score continues with the same three-staff arrangement. Measure 43 includes a trill in the treble staff. The music progresses through measures 44, 45, and 46, concluding with a repeat sign.

47

Measures 47-50 of the Ouverture from Le Bourgeois Gentilhomme. The score continues with the same three-staff arrangement. Measure 47 includes a trill in the treble staff. The music progresses through measures 48, 49, and 50, concluding with a repeat sign.

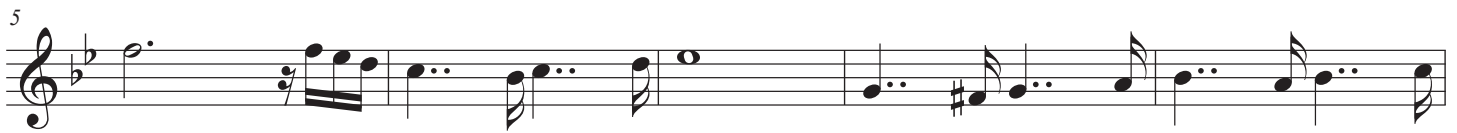
# Ouverture from Le Bourgeois Gentilhomme

Guitar 1

Jean-Baptiste Lully

Arr. M. Basinski

Grave





# Ouverture from Le Bourgeois Gentilhomme

Guitar 2

Jean-Baptiste Lully  
Arr. M. Basinski

Grave







# Ouverture from Le Bourgeois Gentilhomme

Guitar 3

Jean-Baptiste Lully

Arr. M. Basinski

**Grave**

